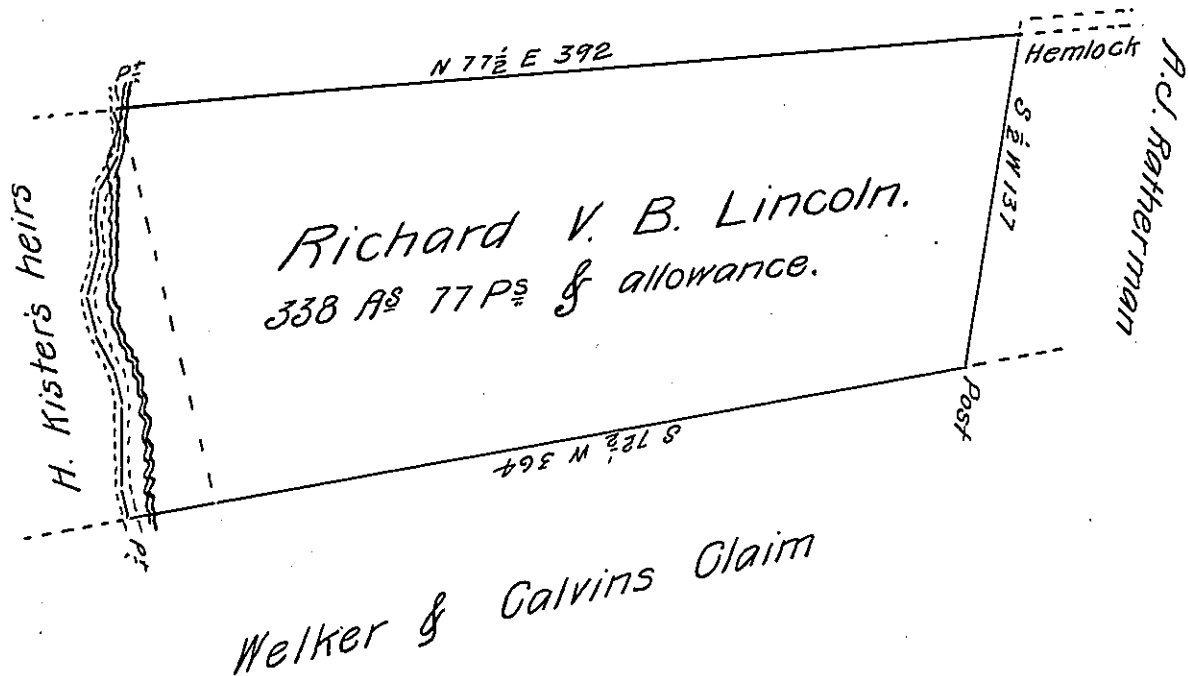


Christian Yantzer

Courses & Distance  
Down the Road

N 16 W	14 P <sup>r</sup>
N 11½ W	34
N 23 W	14
N 32½ W	18
N 23½ W	14
N 4 W	20
N 12½ W	12
N 3½ W	13.5
N 16 E	18
N 2 W	5
N 22 W	8
<hr/>	
	170.5 P <sup>s</sup>



Draft of a tract of land situate in Hartley township Union

County. Containing three hundred and thirty eight acres and seventy seven perches and allowance of six pr. cent for Roads &c. Surveyed the 11<sup>th</sup> day of April A. D. 1871 in pursuance of a Warrant granted to Richard V. B. Lincoln bearing date the 30<sup>th</sup> day of December A. D. 1870.

P<sup>r</sup> R. F. Brown C. S.

To Jacob M. Campbell.

Surveyor General P<sup>a</sup>

IN TESTIMONY that the above is a copy of the original remaining on file in the Department of Internal Affairs of Pennsylvania, made conformably to an Act of Assembly approved the 16th day of February, 1833, I have hereunto set my Hand and caused the Seal of said Department to be affixed at Harrisburg, this twentieth day of October 1905.

*Isaac P. Brown*  
Secretary of Internal Affairs.